

GARAGE CARPORTS

POWER YOUR PARKING

Quest Renewables' solar carport for parking garages stands out among other carports in the market because of its installation process, lighter weight, and open architectural design. Unlike traditional carports, 90% of the system's construction takes place on the ground. Structural assembly, module attachment, and electrical/lighting scopes are all conducted on the ground before the trusses are lifted into place by crane. This process minimizes overhead work and maximizes worksite safety. A reduction in on-site time compared to other carports reduces construction management costs, increases throughput, and limits disruption to parking lot operations.

Quest's structure directly connects to parking garages in a manner that dramatically reduces structural loads and moment forces when compared to traditional carports. The benefits of Quest's parking garage carport include increased structural stability, streamlined engineering reviews, and less frequent garage retrofits.

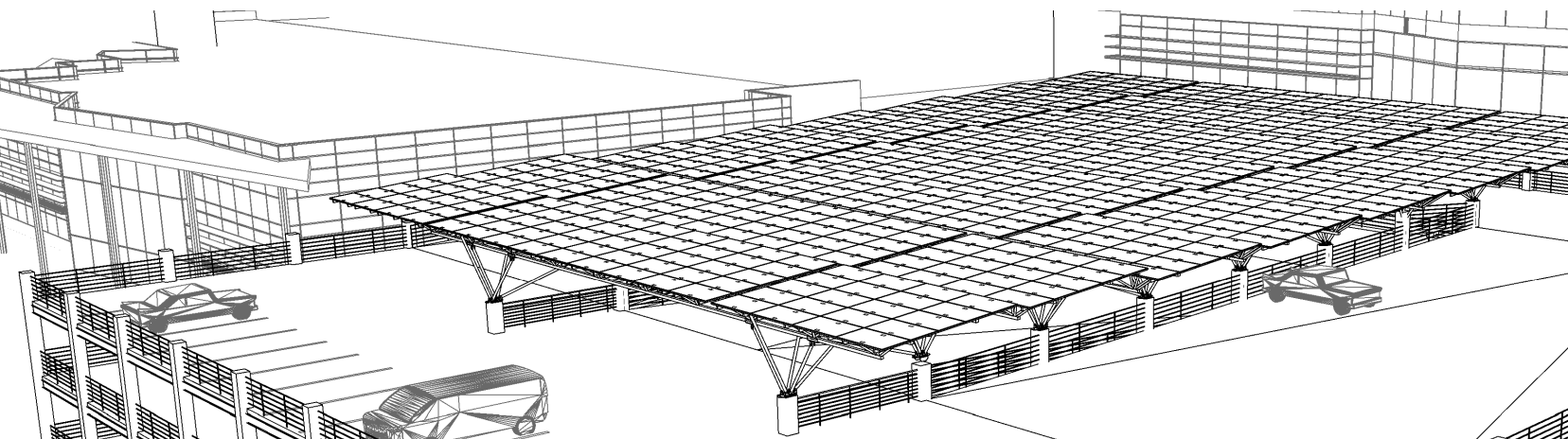
This parking garage carport compliments every modern commercial parking garage with a purposefully sleek, industrial, artistic design. The very same principles which enable the system's construction and structural efficiencies provide a design that cannot be found anywhere else. Make the top level of the parking garage the best place to park with Quest Renewables.

INSTALLATION SERVICES

**FASTER INSTALLATION CAN
LOWER PROJECT COSTS**

**LIGHTWEIGHT
MATERIALS REDUCE
LOADS ON GARAGE**

**CLEAN, ARTISTIC
ARCHITECTURAL DESIGN**



TECHNICAL SPECIFICATIONS

| | |
|--------------------------|---------------------------------------|
| Length | 60'-126' |
| Width | 18'-24' |
| Max Height | 25' to top of modules |
| Span between foundations | 50'-65' |
| DC Capacity | varies by module |
| Wind Load Capacity | designed and tested for 150 mph winds |
| Snow Load Capacity | designed and tested for 60 psf snow |
| Standard steel coating | G90 |

TESTING/CERTIFICATIONS

| | |
|--------------------------------------|--------------|
| Wind tunnel testing | CPP |
| Installation time and motion testing | Yes |
| UL 2703 Bonding and Grounding | ETL Intertek |

OPTIONAL PACKAGES

| |
|-----------------------|
| Snow management |
| Rain water collection |
| Inverter Mounting |
| Lightning |
| Marine environments |

The details contained in this document are estimates based on our experience. If you have a specific contract in mind, please contact us for customized technical specifications.

Quest Renewables partners with our customers to create highly aesthetic solar racking solutions that maximize project performance, eliminate waste, and allow entry into new markets.

Our commitment to optimizing the total installation process results in more satisfied developers, contractors, and site owners.

Made in the USA

1200 Johnson Ferry Rd.
2nd Floor
Marietta, GA 30068
404.536.5787

www.questrenewables.com
info@questrenewables.com

©Quest Renewables 2024

INSTALLATION SERVICES

| |
|--------------------------------------|
| Structural plan sets |
| Turnkey installation |
| Construction plan sets |
| Construction training and management |

FEATURES AND BENEFITS

| | |
|--------------------|---|
| System versatility | enables high density canopies over different parking garage layouts |
| Speed | on ground assembly drives efficiency across BoS |
| Safety | 90% on the ground assembly |
| Labor efficiency | up to 50% less labor hours |

MISC

| | |
|-------------------|-------------------------|
| Standard Warranty | 10-year |
| kW/Acre | varies by module/design |

